

## ■ Opening Hours

		During the Semesters	During Vacations※
Library	Weekdays	8 : 45 a.m.–9 : 00 p.m.	8 : 45 a.m.–5 : 00 p.m.
	Saturday, Sunday, Holidays	10 : 00 a.m.–5 : 00 p.m.	Closed
Children's Library		Wednesday, Saturday, Sunday & Holidays 1.00 p.m. – 4.00 p.m.	Wednesday 1.00 p.m. – 4.00 p.m.

Note : ※ Spring, summer, winter and end of term vacations

## ■ Loan Limits & Periods

	Books and bound periodicals			Unbound periodicals	
	Loan Limit	Loan Period		Loan Limit	Loan Period
		Books	bound periodicals		
Postgraduate students, Faculty and staff, Professors <i>emeritus</i> , Former faculty and staff, Researchers	15	1 month	3 days	3	Until noon of the next business day
Undergraduate students, Research students	10	3 weeks			
Graduates	8	1 month			
Other users	8	3 weeks			

## ■ Loans

A library card is required to borrow library materials. You can use your student identification card as a library card. When you want to borrow library materials, please use the self-checkout machine. If you get an error, please contact the library staff. If you have overdue materials, you can't borrow other materials.

## ■ Returns

Please return library materials to the Circulation desk during the library opening hours. When the library is closed, please use the book return boxes located near the front entrance.

## ■ Photocopying of Library Materials

Photocopying of library materials is regulated by the Copyright law. Please fill out a photocopying application form and submit it to the Circulation desk before photocopying. (You can photocopy only library materials. You can't photocopy personal materials such as your notebook, etc.)

# Library Usage Guide



## Naruto University of Education Library

748, Nakajima, Takashima, Naruto-cho, Naruto-shi, Tokushima 772-8502, Japan

TEL : 088-687-6156

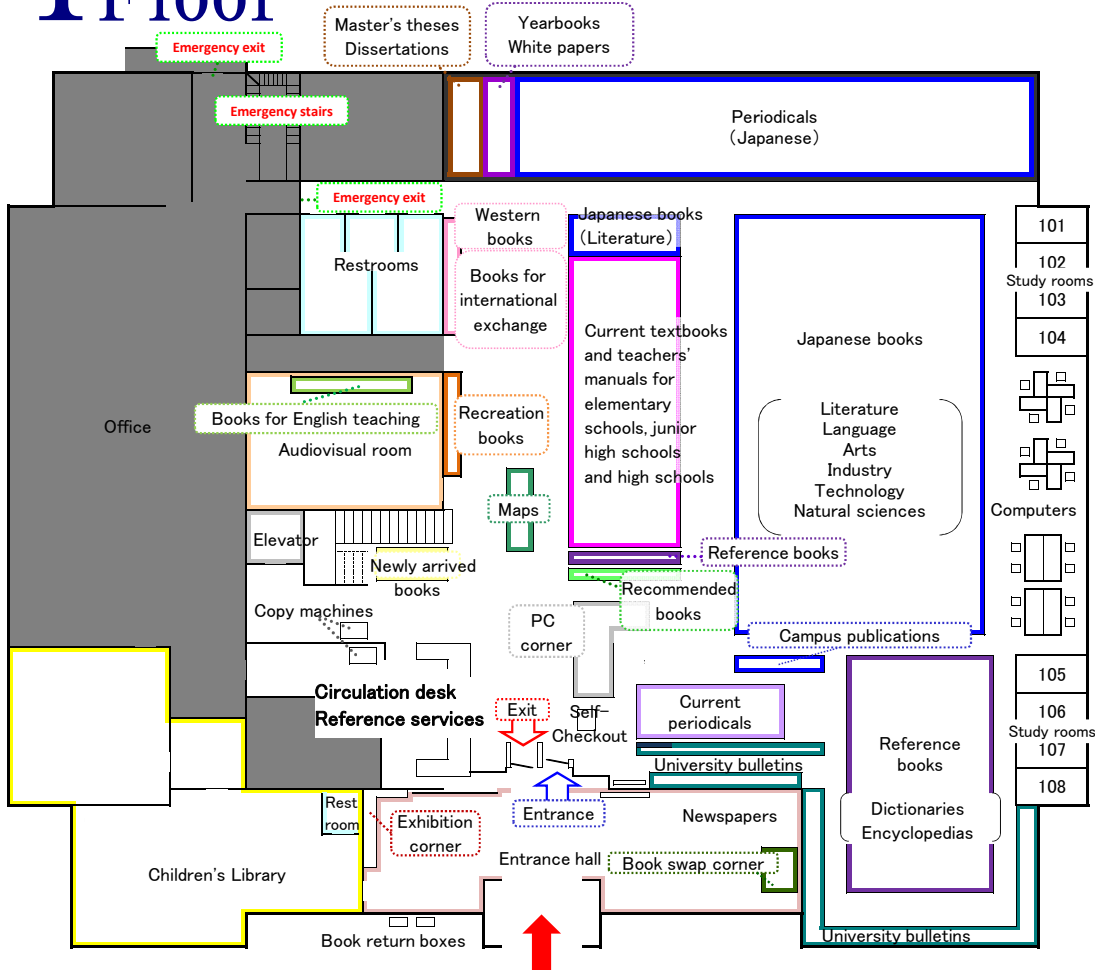
FAX : 088-687-6171

e-mail : [service@naruto-u.ac.jp](mailto:service@naruto-u.ac.jp)

For the latest information on the library schedule such as special closed days, please refer to the library website.

<http://www.naruto-u.ac.jp/library/>

# 1<sup>st</sup> Floor



When you want to use the following rooms, please fill out an application form at the Circulation desk.

- Study room
- Seminar room
- Learning commons
- Rare book room
- OMURA Hama Collection (Students' notes)

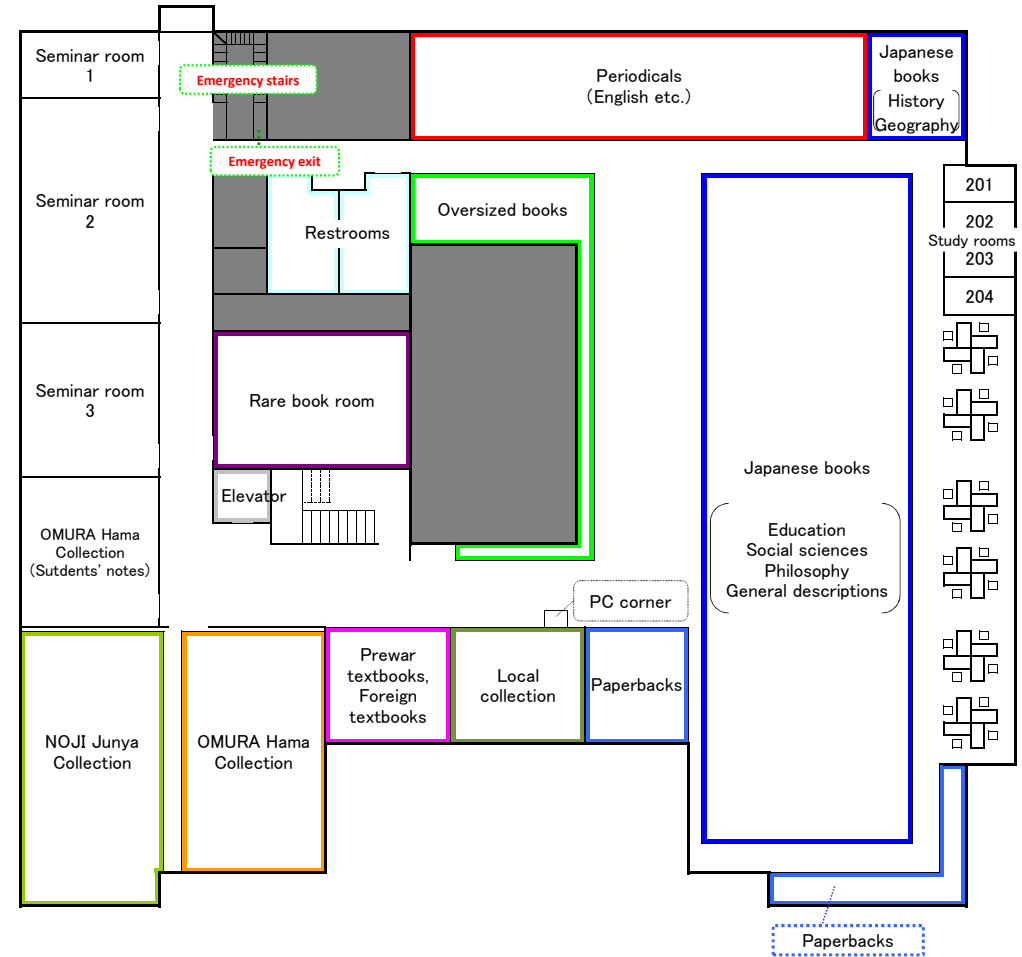
Food is not permitted in the library.  
Drink is permitted only in the Entrance hall.

### Online library catalog (OPAC: Online Public Access Catalog)

If you want to search for library materials, please access the library web page OPAC.

<http://www.naruto-u.ac.jp/library/>

# 2<sup>nd</sup> Floor



Foreign books (English, French, German, etc.) are stored in the closed stack room. When you want to use books located in the closed stack room, please fill out an application form at the Circulation desk and they will be brought to you by staff.

The following users can enter the closed stack room.

- Faculty and staff
- Students attended by their academic supervisor, tutor, or librarian.